



Key Dates

Programme

Closing Party

Appointments

Networking

General  
Information

Contact

Interactive Menu

# Welcome to ILTM Asia Pacific

From information on where to collect your badge to what to wear at our legendary evening events, this is your essential guide to ILTM Asia Pacific 2025; ensuring every moment of your time is as productive and as enjoyable as possible.

ILTM Asia Pacific is once again set to bring the region's leading travel advisors to meet the world's most spectacular travel experiences, over 4 days of one-to-one meetings, events, and unrivalled networking.

We look forward to welcoming you to our incredible show!

*The ILTM Team*



MAY						
S	M	T	W	T	F	S
				01	02	03
04	05	06	07	08	09	10
11	12	13	14	15	16	17
18	19	20	21	22	23	24
25	26	27	28	29	30	31

JUNE						
S	M	T	W	T	F	S
01	02	03	04	05	06	07
08	09	05	11	12	13	14
15	16	17	18	19	20	21
22	23	24	25	26	27	28
29	30					

Appointment Process

Thursday, 8 May 2025

Pre-Scheduled Appointment (PSA) selections open\*

Thursday, 29 May 2025

Pre-Scheduled Appointment (PSA) selections close

Thursday, 5 June 2025

Self-Scheduled Appointment (SSA) selections open\*\*

Thursday, 19 June 2025

Self-Scheduled Appointment (SSA) selections close

Friday, 20 June 2025

Your final schedule is ready to download (PDF)

\*When you search for relevant meeting partners and make your preference selections

\*\*When you can send direct meeting requests to fill any gaps in your diary







Key Dates

Programme

Opening Day

Appointments

Networking

General Information

Contact

Interactive Menu

JULY						
S	M	T	W	T	F	S
29	30	01	02	03	04	05
06	07	08	09	05	11	12
13	14	15	16	17	18	19
20	21	22	23	24	25	26
27	28	29	30	31		

Monday 30 June

6pm – 7pm  
**Opening Forum**  
The Ritz-Carlton, Millenia Singapore

Tuesday 1 July

10am – 6pm  
**Pre-Scheduled Appointments**  
Sands Expo & Convention Centre

Wednesday 2 July

9am – 6pm  
**Pre-Scheduled Appointments**  
Sands Expo & Convention Centre

Thursday 3 July

9am – 5pm  
**Pre-Scheduled Appointments**  
Sands Expo & Convention Centre

7pm – 10pm  
**Welcome Cocktail**  
The Ritz-Carlton, Millenia Singapore

*Evening at your leisure*

6pm - 8pm  
**Late Opening**  
Sands Expo & Convention Centre

9pm - 1am  
**Closing Party**  
MARQUEE Nightclub, Marina Bay Sands

Registration Hours at Sands Expo & Convention are 2pm – 5.30pm on Monday and 8am – 5.30pm Tuesday through Thursday



JUNE						
S	M	T	W	T	F	S
01	02	03	04	05	06	07
08	09	05	11	12	13	14
15	16	17	18	19	20	21
22	23	24	25	26	27	28
29	30					

### Opening Forum

This is where inspiration meets entertainment. Setting the scene for the week ahead, our Opening Forum is where an understanding of the new breed of luxury travellers takes shape. Join us and enjoy stimulating conservations from prominent experts in the field.

### Welcome Cocktail

After an hour of thought-provoking content, here is your chance to unwind and connect in The Ritz-Carlton's quiet enclave with lush greenery surroundings.





JULY						
S	M	T	W	T	F	S
29	30	01	02	03	04	05
06	07	08	09	05	11	12
13	14	15	16	17	18	19
20	21	22	23	24	25	26
27	28	29	30	31		

## Appointments

All appointments are matched using the preferences submitted by buyers and exhibitors during the PSA process, and are arranged on your behalf by ILTM.

Each appointment is one-on-one and will last for **15 minutes**, with a 5-minute break in between. Breaks and lunches will run as listed on the right.

## Your Diary

Your appointment diary is emailed to you one week before the event. It will also be available in the ILTM mobile app.

We do not provide printed appointment diaries, so if you prefer to have a hard copy, please print this yourself before arrival.

## No Shows

All buyers and exhibitors must attend each of their scheduled appointments. If you miss an appointment, you will be asked to explain why.

**Missing appointments can result in no further invites to future ILTM events, and in some cases, fees.**

## Appointment Hours

**Tuesday**, 10am – 6pm

**Wednesday**, 9am – 6pm

**Thursday**, 9am – 5pm

## Break Time

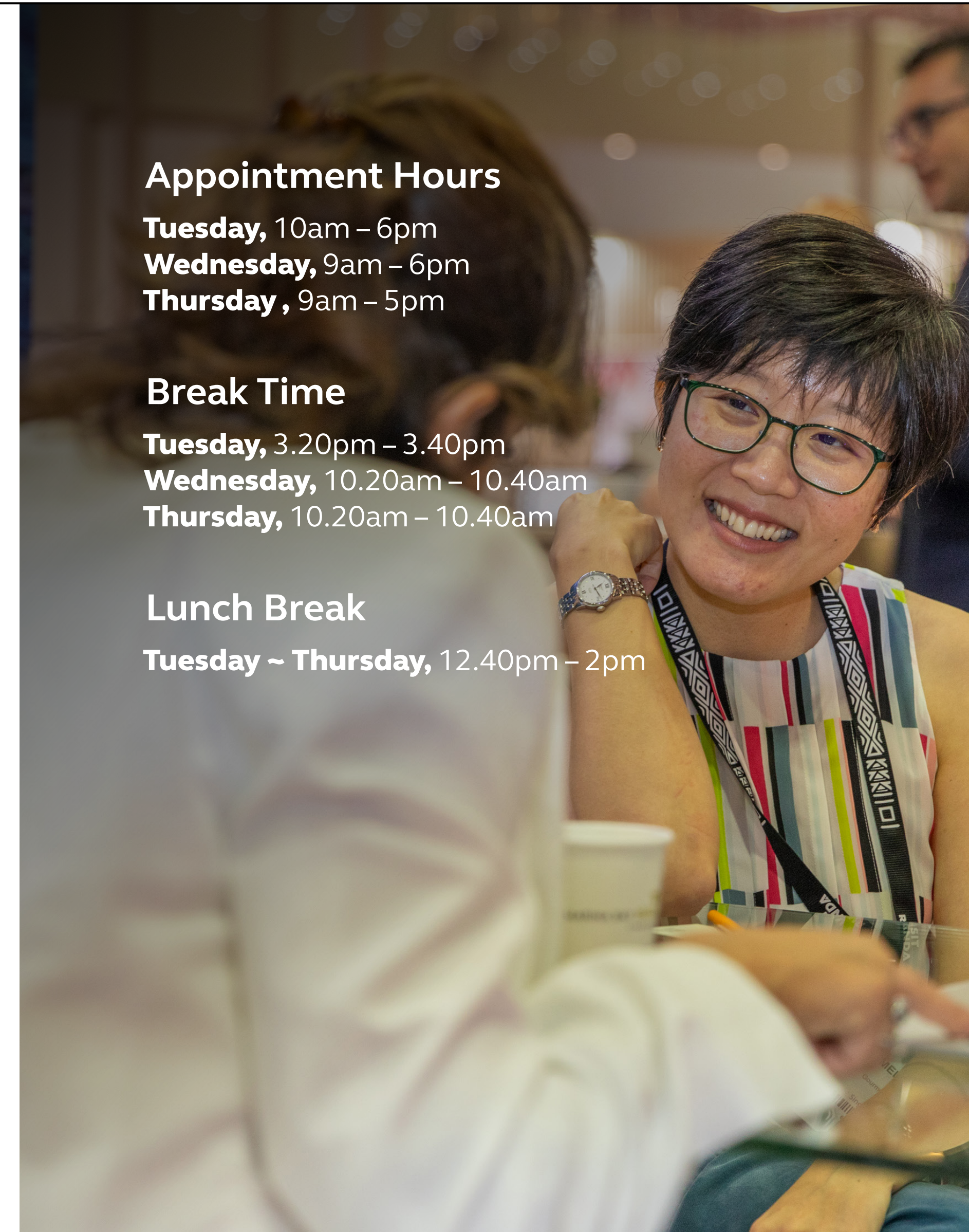
**Tuesday**, 3.20pm – 3.40pm

**Wednesday**, 10.20am – 10.40am

**Thursday**, 10.20am – 10.40am

## Lunch Break

**Tuesday ~ Thursday**, 12.40pm – 2pm







# Late Opening

**6PM - 8PM AT SANDS EXPO, MBS**

With such great success at ILTM Cannes, the halls will remain open late on Wednesday! We're bringing a DJ and some light bites to give you two more hours to network outside of your scheduled meetings. Use this time to throw a get-together on your stand or stroll the show floor, socialising with old friends and new faces.



# Closing Party

**9PM - 1AM AT MARQUEE, MBS**

It's party time! Immerse yourself in a night of thrilling, sensorial fun with state-of-the-art technology and cutting-edge sound. We're talking a massive Ferris wheel (equipped with photobooths in each pod!) and a three-storey helter-skelter. Eat before you arrive, and no drinks on the slide!



## Event App

### Digital Tools

#### Badges

#### Dress Code

#### Venue & Transfers

#### F&B

#### Charging & Wi-Fi

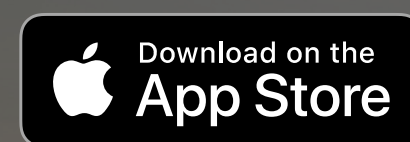
#### Safety & Security

#### Media & PR

Custom-made, our portfolio app is an essential tool that will allow you to maximise your time at ILTM Asia Pacific.

Your unique log-in details will be emailed to you once available, which should be about one week before the event.

After downloading, you can view the event programme, check your diary of appointments (no need to print it!), give real-time feedback on those appointments, and engage with your community via the activity stream.



For troubleshooting, please see our **Mobile App FAQs**.





Event App

Digital Tools

Badges

Dress Code

Venue & Transfers

F&B

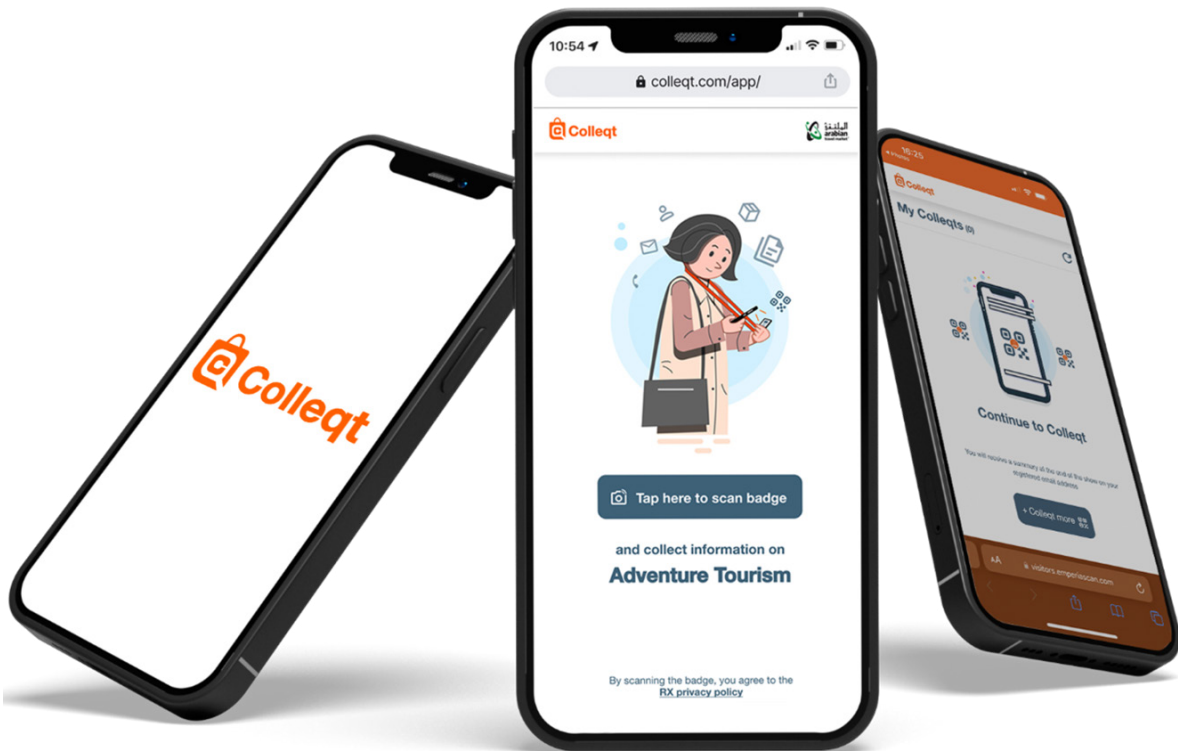
Charging & Wi-Fi

Safety & Security

Media & PR

Buyer: Colleqt

Colleqt lets buyers quickly and easily collect exhibitor and product info by scanning QR codes with their phones. It saves time, keeps all details organized in one place, and sends daily summaries for easy follow-up. Plus, it reduces paper use and helps buyers discover more at the event, making networking simple and efficient.



Exhibitor: RX Lead Manager

RX Lead Manager is a mobile app for exhibitors to easily capture and manage leads by scanning badges, adding notes, and qualifying prospects. It works offline, supports multiple users, and provides instant access to lead reports-helping you stay organized and follow up effectively.

Download the app to maximize your event success.





Event App

Digital Tools

Badges

Dress Code

Venue & Transfers

F&B

Charging & Wi-Fi

Safety & Security

Media & PR

Badges

You will receive an email from **iltm@iceni-es.com** around two weeks before the event with your badge, which must be printed before arrival as part of our print at home initiative.

For onsite queries, please head to Registration at Sands Expo where the team can help.

Make sure you always have your badge with you as it is required to enter all appointments, networking opportunities, and educational programmes.





Event App

Digital Tools

Badges

Dress Code

Venue & Transfers

F&B

Charging & Wi-Fi

Safety & Security

Media & PR

Dress Code

Most attendees choosing to wear smart business attire. During appointments, we advise you wear comfortable shoes as you could be walking quite a bit. The dress code is more relaxed during after-hours events, and most people opt for a more casual appearance.

Note, some of our networking does takes place outside.

Weather

The average temperature ranges between 26 °C and 31 °C July is the beginning of the southwest monsoon season, rainfall usually takes place during mid to late afternoons.



Bring a light layer in case the air conditioning is **too cool** where your meetings are held.





Event App

Digital Tools

Badges

Dress Code

Venue & Transfers

F&B

Charging & Wi-Fi

Safety & Security

Media & PR

Parking

MBS hotel guests can request concessionary coupons from the front desk for self-parking at S\$8.56 per entry.

Transfers

ILTM will provide complimentary transfers **between our Host Hotels\* and Sands Expo & Convention Centre** on appointment days. The exact schedule will be available on the ILTM app and at the hotels.

*\*Conrad Centennial; JW Marriott South Beach; Mandarin Oriental; Ritz-Carlton, Millenia; and Pan-Pacific*

SANDS EXPO AND CONVENTION CENTRE  
Level 1, Halls B & C ➔



Marina Bay Sands. Once the floorplan is confirmed, it will be available to view in the mobile app.



Event App

Digital Tools

Badges

Dress Code

Venue & Transfers

F&B

Charging & Wi-Fi

Safety & Security

Media & PR

Food

There will be a large café/restaurant in the upper left corner of the show floor that serves a selection of hot bento boxes for around S\$25 as well as different salads and sandwiches. As an alternative, MBS boasts a substantial food hall with a wide range of options.

Beverages

It's important to stay hydrated at a show, so please make use of the complimentary water available throughout the venue. Small acts can have a big impact, so we strongly encourage you to bring your own reusable bottle to refill at the stations.





[Event App](#)[Digital Tools](#)[Badges](#)[Dress Code](#)[Venue & Transfers](#)[F&B](#)[Charging & Wi-Fi](#)[Safety & Security](#)[Media & PR](#)

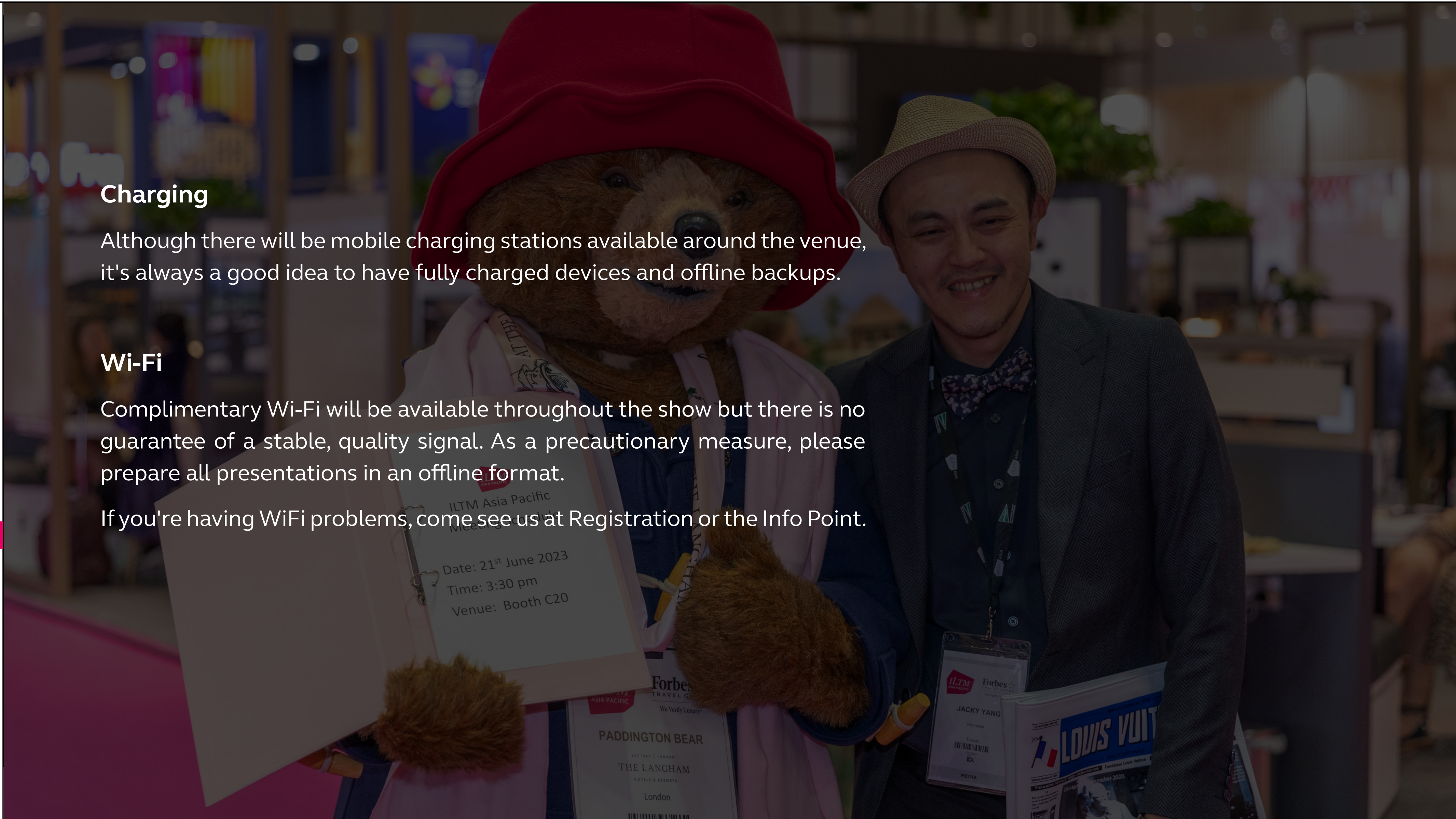
### Charging

Although there will be mobile charging stations available around the venue, it's always a good idea to have fully charged devices and offline backups.

### Wi-Fi

Complimentary Wi-Fi will be available throughout the show but there is no guarantee of a stable, quality signal. As a precautionary measure, please prepare all presentations in an offline format.

If you're having WiFi problems, come see us at Registration or the Info Point.





[Event App](#)[Digital Tools](#)[Badges](#)[Dress Code](#)[Venue & Transfers](#)[F&B](#)[Charging & Wi-Fi](#)[Safety & Security](#)[Media & PR](#)

### Accessibility

All across MBS, there are wheelchair-accessible ramps and lifts. If you have any specific requests, please [get in touch](#) with us in advance.

### First Aid

If you need medical attention during the event, please go to the Organiser's Office, which is in the upper right corner of the hall.

### Valuables

We do not provide a cloakroom, and while there will be security, please make sure you keep your valuables with you and never leave anything unattended.

### Security

Onsite security will be easily identifiable. Please get in touch with the onsite security staff or a member of the ILTM team if you have any safety or security concerns while at the event.



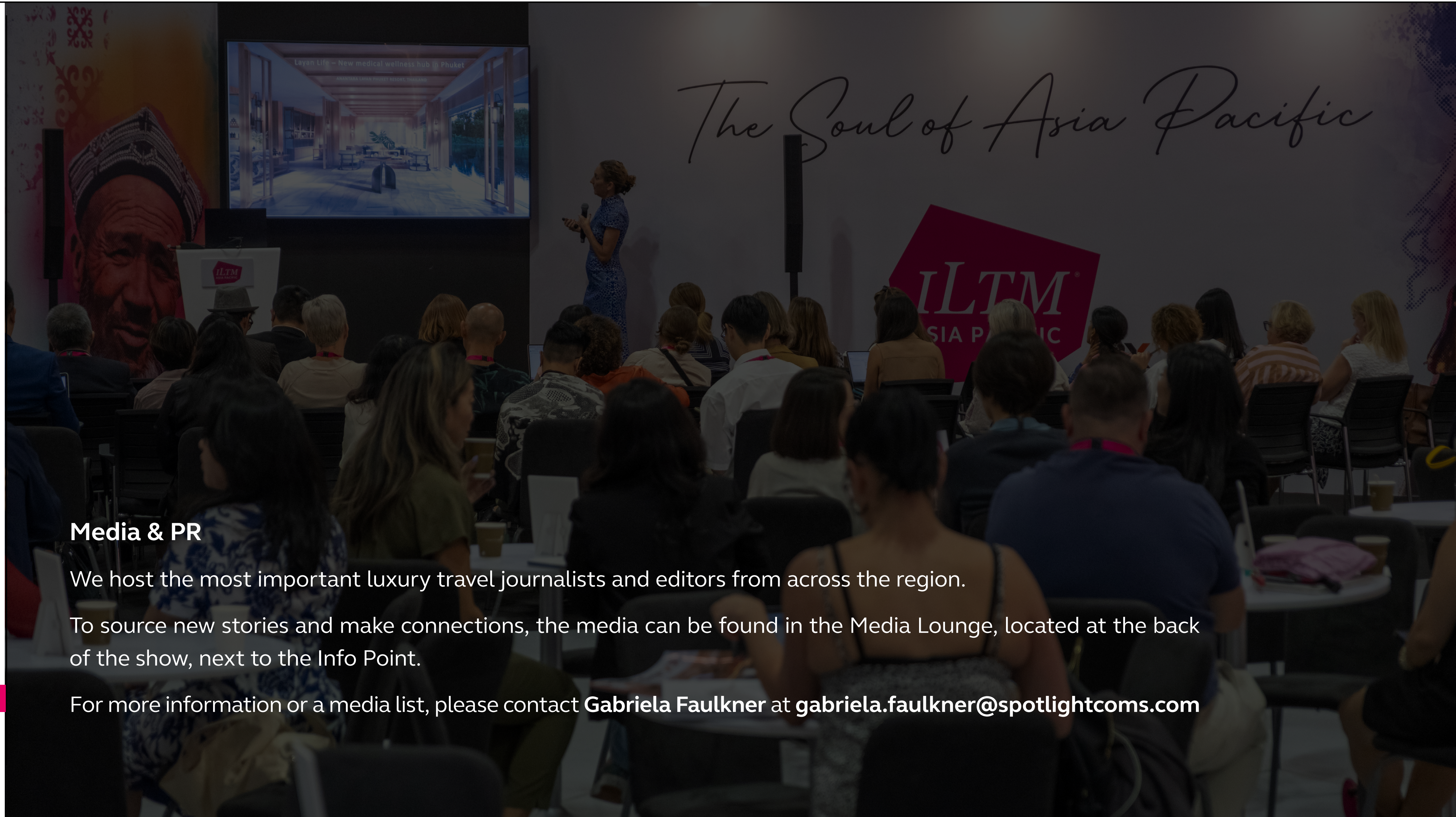
[Event App](#)[Digital Tools](#)[Badges](#)[Dress Code](#)[Venue & Transfers](#)[F&B](#)[Charging & Wi-Fi](#)[Safety & Security](#)[Media & PR](#)

## Media & PR

We host the most important luxury travel journalists and editors from across the region.

To source new stories and make connections, the media can be found in the Media Lounge, located at the back of the show, next to the Info Point.

For more information or a media list, please contact **Gabriela Faulkner** at [gabriela.faulkner@spotlightcoms.com](mailto:gabriela.faulkner@spotlightcoms.com)





## Exhibitors



### Harry Fowles

Sales Team Manager  
+44 (0) 20 8910 7968  
[harry.fowles@rxglobal.com](mailto:harry.fowles@rxglobal.com)



### Katherine Nelles

Senior Manager, Strategic Partnerships  
+44 (0) 20 8439 5032  
[katherine.nelles@rxglobal.com](mailto:katherine.nelles@rxglobal.com)

## Buyers



### Vicky Crane

Buyer Account Manager  
+44 (0) 20 8910 7809  
[vicky.crane@rxglobal.com](mailto:vicky.crane@rxglobal.com)

## PR



### Lucy Clifton

Managing Director  
Spotlight Communications Ltd.  
[iltmpr@spotlightcoms.com](mailto:iltmpr@spotlightcoms.com)



## Travel Enquires

### Bnetwork

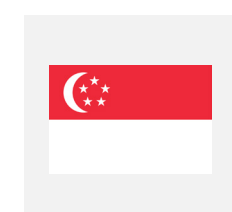
If we've booked your travel and/or accommodation for Singapore  
[travel@bnetwork.com](mailto:travel@bnetwork.com)



## Organiser's Office

### Onsite, Top Right

For support pre-show, please contact our Operations Team at  
[iltm.operations@reedexpo.co.uk](mailto:iltm.operations@reedexpo.co.uk)



## Emergency Contacts

Fire/Ambulance Emergency ~ 995  
Police Emergency ~ 999  
Police Hotline ~1800 255 0000  
Raffles Hospital ~ +65 6311 1111

